

# FDA and EMA oversight of disruptive science on the application of Finite Absorption Time (F.A.T.) concept in oral drug absorption: Time for scientific and regulatory changes

E. Toulitsis, A. A. Tsekouras, P. Macheras  
Supplementary information

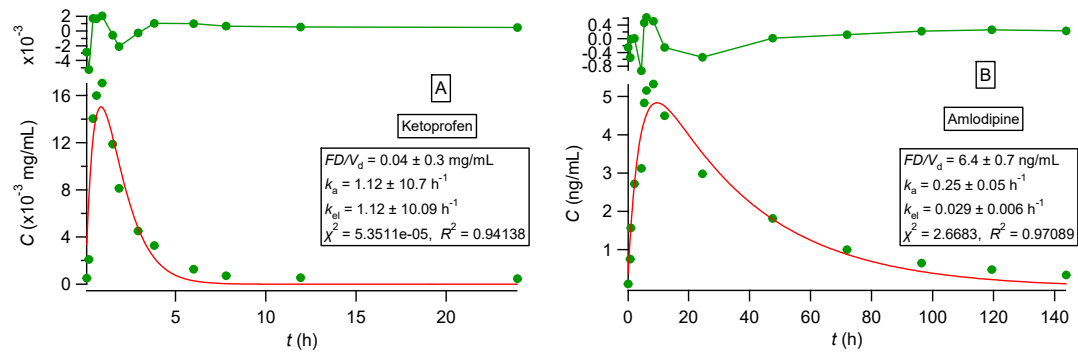


Figure S1. Fittings of Bateman Equation (Eq.2). (A) Ketoprofen experimental data [33]; (B) Amlodipine experimental data [34]. The top panel depicts the fit residuals.

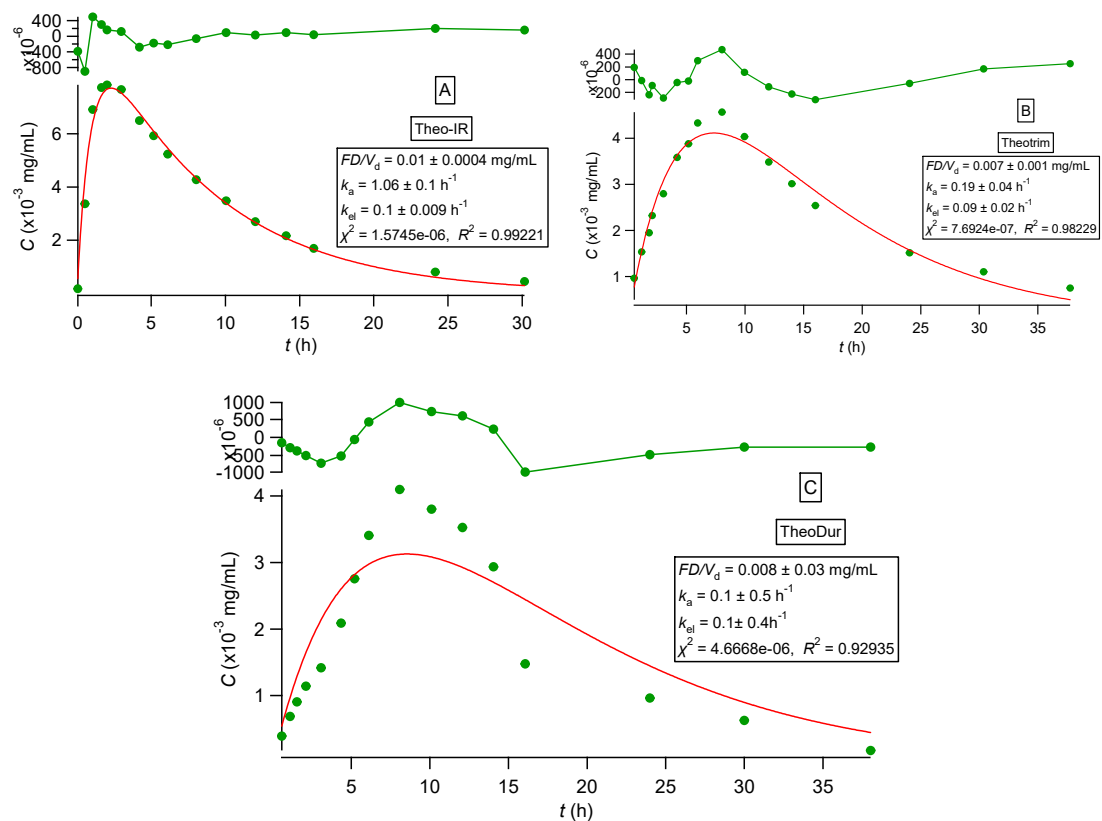


Figure S2. Fittings of Bateman Equation (Eq. 2). (A) Theophylline (Immediate Release) experimental data [35]; (B) Theotrim (Extended Release) experimental data [35]; (C) TheoDur (Extended Release) experimental data [35]. The top panel depicts the fit residuals.

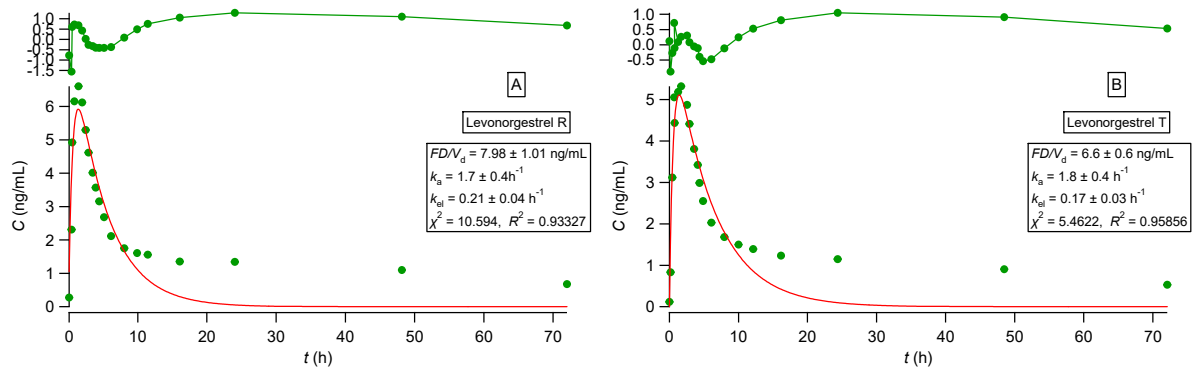


Figure S3. Fittings of Bateman Equation (Eq. 2). (A) Levonorgestrel (Reference) experimental data [36] ;(B) Levonorgestrel (Test) experimental data [36].The top panel depicts the fit residuals.